

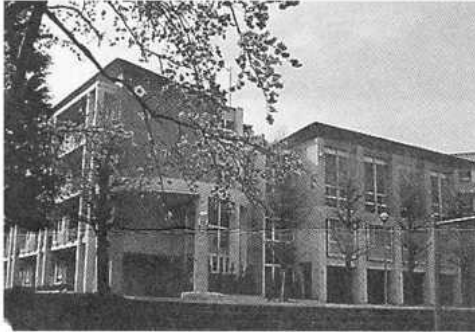
# Hyotan

## No.157

May. 2005

Edited by Hyotan Editors Club  
Publisher: Hitachi International Committee  
Phone: 0294-22-3111 ex534 Fax: 0294-24-5302  
E-mail: kokubun@ray.hidecnet.ne.jp

### Hitachi Second High School



Hitachi Second High School was founded in 1927 as a private school by Mr. and Mrs. Hisanosuke Nagai. They had

lost their two daughters one after another. Devotion to girl's education was the way they found to console their grief. In 1936 it changed to a prefectural girls' high school, and in 1948 it was renamed Hitachi Second High School.

It is located on a hill in the center of Hitachi. Beautiful cherry and ginkgo trees around the campus create a calm presence of mind. Under the school motto; "Be generous and graceful, Cooperate with each other, Have a bright and cheerful heart And work harmoniously with others", the school wants its students to study for knowledge, sensitivity, and perseverance in order to live for the future.

There are 18 classes as part of the general education course and 3 as part of the international course, and more than 800 students are studying under the direction of 65 teachers.

85 % of the graduates go to colleges, junior colleges, or special training schools, and those that enter employment directly are about 8%. In accordance with the post-graduation needs of their students, the school has put together a well devised curriculum to attain their goals.

It is worth mentioning that this school has an international course which attracts students from all over Ibaraki. It started in 1993 and has been aiming at producing internationally aware graduates since then. This is bearing fruit now and will surely do so in the future. Recognizing that English is an important international language, the school assigns the international course students more English credits than those of the general education course (29 for the former and 23 at maximum for the latter). The various sub-courses which form part of them are very attractive such as English Understanding, Expression, Cross-Cultural Understanding, Current English, etc. Students enjoy stimulating classes given by foreign teachers.

Besides daily classes, the school holds various

events of great value. There is four days English camps for all first and second graders, a school trip abroad for five days, an exchange trip to New Zealand for two weeks, etc. As for the Exchange Trip, it is open to students on the general education course as well.

In 2003, Hitachi Second High School was designated as a Super English Language High School by the Ministry of Education and Science for a period of three years. This has enabled the school to experiment further in English education. Amongst these experiments, the Hitachi Summit was picked up by the media and became a subject of attention. This was a debate between high school students from Hitachi and foreign students studying in Japan. During the debate, Hitachi Second students did remarkably well.

These kinds of events help students to understand foreign culture and at the same time they give students a chance to lose their prejudice towards certain countries. Through these experiences, students find themselves acquiring an internationally aware mind. Some of their comments include: "I am happy to study at this school." Many students exchange mail with the foreign students whom they got acquainted with through these events, and enjoy this friendship.



There are two foreign students at the school (one from New Zealand and one from Indonesia) and five Hitachi

Second students are studying abroad.

Regarding extra curricular club activities, 60 % of the students belong to one of 23 clubs. There are 13 sports club including Japanese fencing and Japanese archery, and 10 cultural clubs including tea ceremony. Students practice diligently in each field and get good results in tournaments and contests. In most areas, they are at the highest level in Ibaraki Prefecture.

Now the new school year has just begun. The students will surely add new pages to the school's 77-year history. Let's hope they can be supple and beautiful in all their activities like the wild rose which is the school's emblem.

## The delegation from Sister city, Tauranga, New Zealand

The Tauranga City Mayor and a 10-member delegation visited Hitachi City from April 8th to 12th. The main purpose of the visit was to promote educational, cultural and economic exchange between the two cities as part of the sister-city program. Both cities have conducted a number of exchange activities since the signing of the sister city agreement in 1988.

The delegation, led by Tauranga Mayor, Mr. Stuart Crosby included the following members: Mrs. Lesley Crosby, Mayoress; Bill Faulkner, City Councillor, Mrs. Barbara A. Faulkner, Executive Secretary, Western Bay of Plenty District Council; Julie Kerry, Tourism Bay of Plenty; Graham S. Skellern Reporter, Bay of Plenty Times; Aaron S. McCallion, Executive Director, Education Tauranga Inc., Margaret I. Cooper, Sister City coordinator, Tauranga City Council; Huikakahu Brian Kawe, Chairperson, Ngati Ranganui Iwi; Janice Kawe, Member of Ngati Ranganui Iwi; Alf McClausland, Deputy Chairperson, Ngati Ranganui Iwi.

Besides the bilateral meeting at Hitachi Chamber of Commerce and Industry, the Tauranga delegation actively participated in events organized by Hitachi city such as Sakura Road Race, carrying Omikoshi (a portable shrine for a festival), fixing Japanese green tea at the tea ceremony, as well as Japanese style flower arrangement in the Japanese culture experiencing program. They all enjoyed actually touching the culture.

On April 10<sup>th</sup>, the Tauranga delegation met the Kiwi-Hitachi Club members, a civic group which plays an active role to foster good relations between Hitachi and Tauranga.

During the meeting, they discussed how they could collaborate on the Industrial Festival coming up in November, in which the KIWI-HITACHI CLUB will introduce and sell products from Tauranga. After the discussion, they had an extremely convivial potluck party.

Ms. Akiyama, one of the KIWI-HITACHI members, gave her impression of the meeting as follows: "It was very impressive to see how much people from the Tauranga city administration and "Iwi" ("people in Maori) respect each other. Especially the way the "Iwi" talked and sung really got to our hearts and made us cry even though we don't know any Maori. Also, the way of their respect for their ancestors and value for spiritual bond reminded us how precious the spiritual link is."

At the last night of their visit, a farewell party was given by Hitachi City at Hotel Sun Garden. Attendees included representatives from Hitachi City and the Hitachi Chamber of Commerce and Industry, members of the KIWI-HITACHI CLUB, members of the Hitachi Boy Scout and Girl Scout groups, students from Hitachi Second High School and Nissenko(Hitachi Senior Technical School) as



well as people associated with New Zealand and Tauranga. Mayor Crosby's speech appreciated

ion to Mayor Kashimura and recounted the success of the visit. He extended his invitation to Mr. Kashimura and his party to visit Tauranga in two years time. Hitachi City presented a photograph, a bamboo doll, and a lantern to Mr. Crosby. In return, the Tauranga Mayor presented Mayor Kashimura with a painting, adding humorously that in Mayor Crosby's next visit to Hitachi, he would expect to see this painting hanging on the wall in Mr. Kashimura's office.

After Mr. Yamamoto, the Chamber chairman, carried out the toast, "Kanpai," the party mood gradually became more relaxed and friendly. There was a koto performance by an ALT Ms. Leah Baskett from Tauranga and Ms. Morimura (president of the KIWI-HITACHI CLUB); a hand-bell performance by some Hitachi Girl Scouts, which led on to a chorus by the Hitachi Boy Scouts. Students from Hitachi Second High School sang a Japanese traditional folk song, Soran-bushi, and some Nissenko students sang "Country Roads". Also, Mr. Kawe suggested singing a Maori song and everybody joined in singing in Maori. Mr. Kawe said that he will always remember the kindness and goodwill extended by the people of Hitachi, and would like to invite everyone to Tauranga's "Marae" (a "Marae" is a special and sacred place for Maori people).

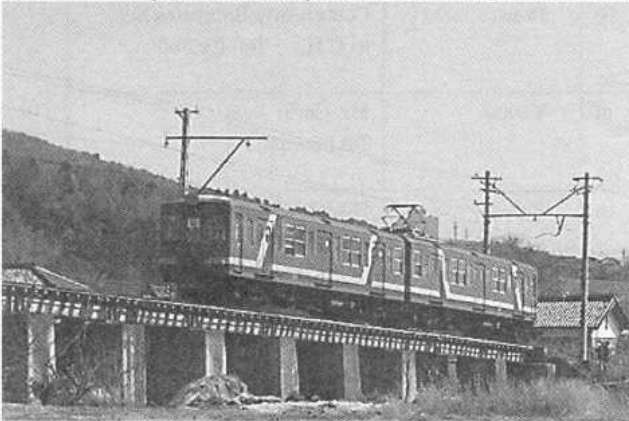
Even after the party finished, some people lingered on enjoying each other's company. It was a very pleasant evening.



On April 12<sup>th</sup>, Mayor Crosby, Mayor Kashimura and both city leaders planted a cherry tree at the top of Kamine Mountain to commemorate their visit and their strengthened friendship.

## “Good-bye to the Hitachi Dentetsu Line”

On March 31, 2005, the Hitachi Dentetsu line ended its transportation service, thus bringing to a close its 77 years history. The Hitachi Dentetsu line,



which was originally founded when the Johoku Electric Rail Road company first opened the line between Omika and Kuji (present Kujihama) in July 1928. It then extended the line from Kuji to Johoku-ota in July 1929 and finally from Omika to Ayukawa in March 1944, to create a line 18.1km in length. In July 1944, the company under the influence of Hitachi Ltd. changed its name to “Hitachi Dentetsu”, continuing its rail service for more than seventy years, after that it has had to close down through competition from automobile transport.

The Hitachi dentetsu line helped us so much to

go to the office, school, shopping and sightseeing etc. in the Hitachi-Hitachi-Ota, region of Ibaraki. In 1991 Hitachi Dentetsu line first introduced one-man operated trains and recently had the unique idea of running a beer hall train “Donden-go” from May 1998. Furthermore, in May 1995 the old type carriages were replaced by those based on the Ginza line and Tozai line carriages of the Eidan subway (present Tokyo Metro). This pleased rail enthusiasts immensely.

A couple of days before the final date of service, I took the train from Omika to Johoku-Ota. The train was crowded with many passengers and the carriage seemed to be saying “Wow! I feel heavy today for a change! The train started off slowly with a “Heigh-ho!” like bell. Several comments were heard from the passengers such as: “Oh, we’ll miss the train.” or “It’s going to be so inconvenient for school without the train.” Then I felt sad that the line was to be ended. Though the journey only took 20 minutes, the train creaked as if it were gasping. As I got off, I called out to the train, “Thanks for all your hard work over the years!”.

The train may not run now, but the memory of the Hitachi Dentetsu line will not easily be forgotten.

“Thank you very much, Chin-den! and Good-bye, Hitachi Dentetsu line!”.

---

## Japanese Culture and Social Customs Part 3

### Good luck symbols The Owl (Fukurou)



What do you think when you think of an owl? Is an owl a cute, innocent bird with a large head and eyes and hooked beak, or an ominous bird which hoots weirdly at night? Owls are seen as a good luck symbol all over the world. There are about 140 different species of owls alive

today, inhabiting a variety of ecological regions, but not the South and North Poles. There are 10 species of owls inhabiting Japan. In Europe, owls were loved as a bird bringing good business fortune. They were believed to know everything about the world, turning their heads right round and having extraordinary nocturnal vision.

They are also a popular symbol for Japanese

people, who call them “fuku-rou”, or “fu-kurou”, which means that good luck will come soon, that people will never suffer hardship. So, owl images are occasionally used for birthday presents, 60th birthday (kanreki) gifts, souvenirs and piggy banks. Various types of owl made of wood, pottery, cloth are on sale these days. Now that you know they are good luck, why don’t you decorate your desk with an owl figure?

Owls can move their heads around about 270 degrees. This has been interpreted as owls having a large circle of acquaintances i.e. they are good at business. Secondly, owls are considered to look intelligent. So they have long been used as a symbol of wisdom and learning. Thirdly, owls sleep during the day and emerge at night to hunt small prey. So they are considered to look after the family as a guardian deity. And owls can keep still in the same spot for 20 days. Thus giving them the right to be a symbol of patience.



### Events

Date	Event & Main Attractions	Place	Admission	Inquiry
3 <sup>rd</sup> -5 <sup>th</sup> (NH) 8:30-19:15	Hitachi Fuyumono & Sasara (Tangible Cultural Properties)	Daioin Av., 10 Squares or Shrines in the Ctr.	Free	Community Relations Sec. in C.H. Tel: Ex.535
7 <sup>th</sup> (Sat) 18:50-20:50	Fukiage Charity Dance Party (Fukiage Dance Club)	South Branch of C.H. (Former Kuji P. H.)	¥1000	Mr. Gorai Tel 53-5550
8 <sup>th</sup> (Sun) 9:00-	Citizens' Walking Club (Bring lunch & bowl for miso soup)	Open-air stage in Kamine Park	Free	Hitachi Public Hall Tel 22-6483
8 <sup>th</sup> (Sun) 11:00	Mr. Tadashi Yoshida Cinema Festival	Hitachi Civic Center Music Hall	Free	Hitachi Civic Center Tel 24-7711
11 <sup>th</sup> -15 <sup>th</sup> (Sat) 9:30-13:00	"Ibaraki Branch Exhibition" by Hakua Society (Picture)	Hitachi Civic Center Gallery	Free	Hitachi Civic Center Tel 24-7711
14 <sup>th</sup> (Sat) 9:30-13:00	"Herb Class" in Oku-Hitachi Kirara-no-sato (Tea party incl.)	Kirara-no-sato Kirara Kan (Hall)	¥1000 incl. adm. fee	Kirara-no-sato Tel 24-2424
14 <sup>th</sup> (Sat)-15 <sup>th</sup> (Su) 9:00-	Renewal Open Events of "Maenouchi Kids Park"	Maenouchi Kidds Park (Near Ctrl. Ginza)	Free	Urban Improvement Sec. of C.H. Ex. 276
15 <sup>th</sup> (Sun) 14:00-	Regular Concert of Hitachi Civic Brass Band	Hitachi Civic Center Music Hall	¥500 in advance	Hitachi Civic Center Tel 24-7711
29 <sup>th</sup> (Sun) 10:00-	Spring Japanese Ethnic Dancing & Folk Song Recital	Hitachi Public Hall	Free	Hitachi Public Hall Tel 22-6481
29 <sup>th</sup> (NH) 14:00-	Regular Concert by Hitachi Symphony Orchestra	Hitachi Civic Center Music Hall	Adult ¥1200 Std. ¥800	Hitachi Civic Center Tel 24-7711

NH: National Holiday

C.H.: City Hall (Tel: 22-3111)

### Japanese Language Classes

NAME	LOCATION	DATE & TIME	Fee	Contact
<b>Sakura</b>	Shichokaku Center etc.	Saturday 10:00-11:30	¥1,800/semester	Ms. Haruko Yada Tel/Fax (0294) 36-3529
	Kyoiku Plaza	Thursday 10:00-11:30	¥1,800/semester	
<b>Sakura (Kanji)</b>		Friday 10:00-11:30	¥1,800/semester	
<b>Anzu</b>	Shichokaku Center	Tuesday 19:00-20:45	¥300/month Ms. Keiko Kanaoka Tel/Fax (0294) 42-8176	Mr. Shichizoh Kohsaka Tel/Fax (0294) 35-3989 Kohsaka73@ybb.ne.jp
	Kyoiku Plaza	Friday 14:00-16:00		

### Movies in May

Theater	Day	Titles (Original Titles)
Cinefesta 1&2 Tel:21-7472	-21	Meitantei Konan [J]
	-21	Amari Jinsei [J]
Hitachi Central Tel:21-1386	-6	Kureyon Shinkan [J]
	-6	Kokkuri-san [J]
	7-	Koshonin Mashita Masayoshi[J]
Aigakan 1&2 Tel:23-2323	7-	Mask 2 [E]
	7-	Kokkuri-san [J]
	-13	Futari wa Purikyua [J]
	-13-	The Aviator [E]
Theater Isejin Tel:22-1761	-	Constantine [E]
	-	Small we Dance [E]

### Emergency Doctors on Duty

Hitachi uses a system called "TOBAN-I". The doctors in the city take turns standing by for emergency patients from 9:00 to 16:00 on Sundays and national holidays.

#### Surgeons

May	Hospital Name	Address	Tel
1	Hitachi Seikeigeka Iin	Kashima-cho	21-0063
3	Seirei Memorial H.	Nakanarusawa	35-7171
4	Shimazaki H.	Benten-cho	22-5051
5	Takayama Seikeigeka Iin	Namekawa-cho	24-5005
8	Kuji Chinone H.	Kuji-cho	52-2119
15	Yamake H.	Chikoku-cho	33-2121
22	Hitachi-kou H.	Kuji-cho	52-3576
29	Kuriyama Seikeigeka H.	Hidaka-cho	42-8100

Physicians, Pediatricians and Dentists seven days a week: Hitachi Medical Center (5-1-1 Higashitaga-cho)  
Tel 0294-34-2105

Have you visited Hyotan Home Page.  
<http://www.city.hitachi.ibaraki.jp/upload/english/index.htm>

You can read Hyotan with color photograph  
anytime, anywhere in the world.